



EVERGREEN ENTERPRISES

Company Overview

Evergreen Enterprises was established in 2013 focusing Borewell, Mining, Drilling Contracting works. Our Head Office is located in Namakkal, India. Being a service provider company for construction and infrastructure, we offer solutions to Hydro Power Projects, Dams, Tunnels & Solar Power Plants, Commercial Buildings and other civil engineering works now. We also supply construction equipment in India and abroad.

We have diversified our activities into drilling, grouting works such as TAM Grouting, Consolidation Grouting, Curtain Grouting, Tunnel Contact Grouting, Slope Stabilization works such as Rock Anchors, Rock Bolting, Self Drilling Anchors, Shotcreting, Rock fall barriers, High Tensile Mitigation, Micropiling, Ground anchors, Prestressing and other civil works. The company has all the state-of-the-art machinery like, DTH Drilling Rig, Rotary drilling Rig, Crawler Drilling Rig and Tractor Drilling Rig. The detailed list is enclosed here with.

It is our prime objective to deliver highest quality work to meet the satisfaction of our customers in every project we undertake. Our growth momentum is to increase our annual turn over on a year-on-year basis.

We are a well experienced, professionally managed, technically & financially sound group capable of meeting up to the requirements of our existing. Clients & prestigious customers. We are enclosing our company profile containing equipment and Clientele.



Our Mission

On a journey towards becoming the Preferred Destination for single point solution provider in Geotechnical & Civil Engineering.

To strive for excellence through teamwork & partnership, Aim to be best in our field, driven by values and a desire for continuous improvement in every area.

Our Vision

We are committed to providing quality services to improve and develop the overall infrastructure of various utilities across countries. We hope to support and help companies provide essential services to the common man.

It is our responsibility to continually develop, and tap into, the potential of our employees. We are focused not only on the growth of Evergreen construction as a company but also on the growth and success of everyone associated with us.

Our Services

Evergreen Enterprises offers a gamut of services that cater to a very diverse range of industries. Below is a glimpse of the services we provide and the industries they can be utilized in.

DEWATERING

It is a technique wherein a deep well system is used to drain water from a ground water table, in spite of the huge volume of water. Artificial temporary wells are created with the help of a submersible pump. Multiple borewell points are located and to create dewatering options. Once the water is removed, the construction proceeds smoothly.





GEO TECHNICAL INVESTIGATION

Core drilling is a technique where in a hollow cylindrical drill bit is used to make holes. The drill bits are made of metal and the tips are either diamond or carbide coated

WATER WELL DRILLING- DTH WATER WELL DRILLING

DTH stands for “down-the-hole”.

In DTH drilling, the hammer is placed above the drill bit. The force required is transmitted by the drill pipes. The hammer and the drill bit rotate with a fluid which could be air or water or drilling mud.

Successive pipes are added behind the hammer as and when the hole gets deeper.



Rotary Drilling

Rotary drilling is a technique where in a deep Observation bore hole is made in order to obtain rock samples. The drilling method involves the use of a rotary cutting head at the end of a long shaft. This is driven into the ground as the head rotates. The system gets the required lubrication using air, water or drilling mud. This helps to keep the cutting head cool.

Odex Drilling

Odex stands for Overburden Drilling Eccentric. In this technique a casing is used to line the hole that over burdens the soil before entering the rock layer.

GROUND ANCHOR

It is a device that is de-signed to support structures and is used in geo technical and construction applications. It can be referred to as a percussion driven Soil anchor, Rock bolt and Cable anchor.

DRILLING WORKS



STRESSING & GROUTING

U-TURN RETRACTABLE ANCHOR



SLOPE STABILIZATION



ROCK BOLTING

Rock bolting is a technique used in tunneling and mining where a steel rod is inserted into the rocks. It is to impart support to the roof and sides of the tunnel.



SELF DRILLING ANCHOR

Self drilling anchors are a particular kind of rod anchors. They combine the processes of drilling, insertion as well as grouting. This greatly reduces the time taken to complete the project.



SHORT CRETING

It is a method by which concrete is pneumatically conveyed on to a surface during construction. The concrete is strengthened with steel mesh or rods. It is a method by which concrete is pneumatically conveyed on to a surface during construction. The concrete is strengthened with steel mesh or rods.



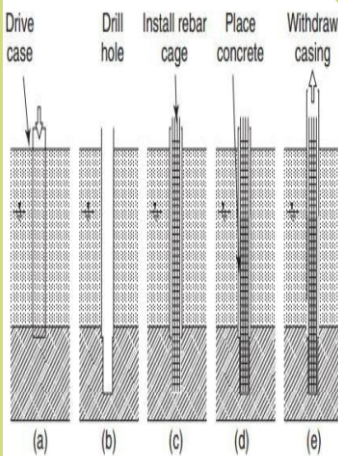


HIGH TENSILE MITIGATION

Steel Structures with high strength and tensility are used to prevent rock fall. They are highly durable and can withstand heavy loads. They can be used as a drapery or along with plates to anchor the mesh.

ROCK FALL BARRIERS

They contain a specific braking system. The energy absorption is structured in such a way that the performance is consistent even over time. The barrier is resistant to damage by corrosion.



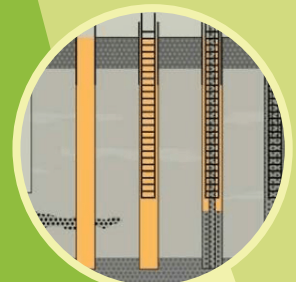
MICROPILING



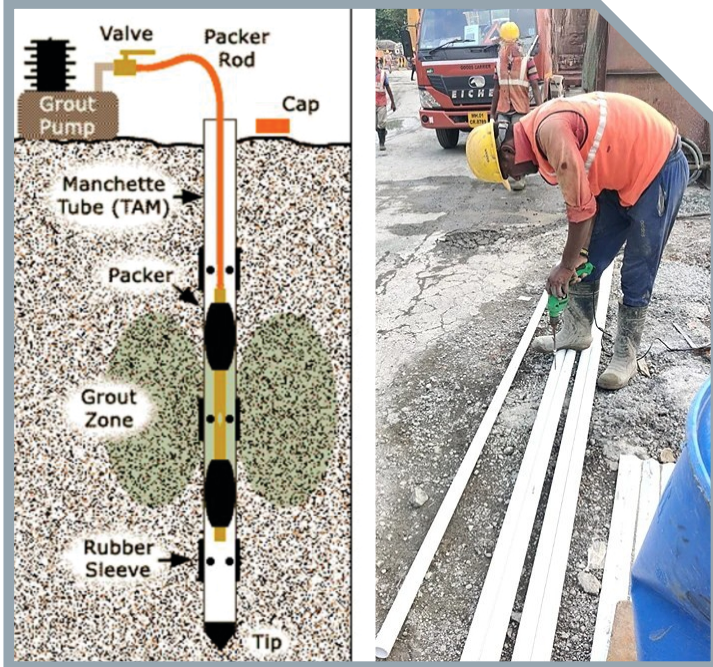
Micropiles are friction piles that run deep into the foundation. They are formed using strong steel casings. This pile helps in the load pressure to be transmitted to the soil around them.

These piles are inserted deep into the foundation and strengthened by adding a mortar of sand and cement.

They are used in rocky areas to provide structural support and underpin the foundation. They help in transfer of load.



GROUND IMPROVEMENT



TAM GROUTING

Tube a Manchette (TAM) grouting is a method where in perforated pipes are used in combination with a special grout. These pipes/tubes are then thrust into the hole for grouting. The small portions of rubber sleeve (Manchette) are present on the outer portion of the pipe that acts as a one way valve.

It is commonly used in tunnel excavations.

CURTAIN GROUTING



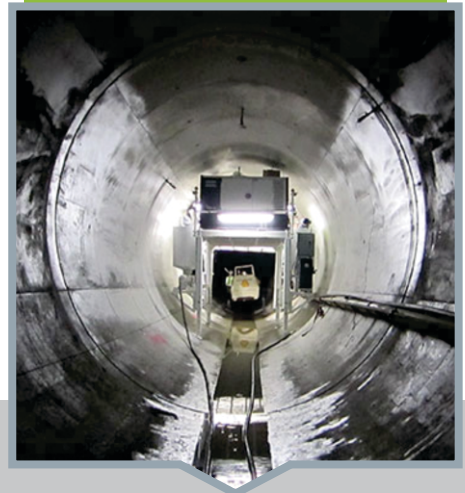
Curtain grouting is the technique where a curtain or barrier of grout is constructed to reduce permeability. It is done by drilling and grouting a series of holes.

CONSOLIDATION GROUTING

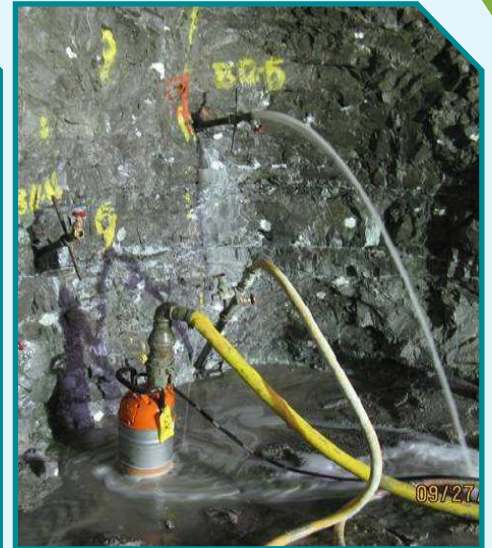


This technique is used when open voids that are present in rock mass with fluid matter. This reduces permeability by improving the shear strength. Also, this reduces deformability. It also helps to reduce the outward flow of water in high pressure water tunnels.

TUNNEL CONTACT GROUTING



During the Tunnel Contact grouting process, grout is injected into voids between a tunnel liner and rock surrounding it. Additional consolidation of rock formation surrounding the tunnel is also achieved with this technique.



Chemical grouting is a widely used technique in tunneling to control water ingress, stabilize weak soils, and strengthen rock formations. It involves injecting specialized grout materials into the ground to improve its properties by filling voids, sealing cracks, and reducing permeability.

LIST OF MACHINERIES



S.no	Name	Number
1	Excavators, - Ex200	3
2	Air Compressor 1200 Cfm	3
3	Air Compressor 1100 Cfm	10
4	Air Compressor 600 Cfm	4
5	Air Compressor 500 Cfm	15
6	Air Compressor 450 Cfm	6
7	Lorry Mounted DTH Drilling Rig	5
8	Hydraulic Crawler Drilling Rig	9
9	Tractor Drilling Rig	3
10	Wagon Drill / Roc Drill Rig	8
11	Hydraulic Jacks & Pumps	10
12	High Pressure Grouting Pumps	22
13	Spider Drilling	25
14	Crawler Mounted ROC	7
15	Shotcrete Pump	5
16	Road Rail Wheel Vehicle	2
17	Vertical Turbine Pump unit	2
18	HDD Drilling Machine	1
19	RC Drilling Machine	1
20	Diamond Core Drilling Machine	1
21	Chemical grouting pump	2

OUR PROJECTS AND CLIENTS

Evergreen Enterprises has worked in complex projects and has technical experience to meet contracting standards and capable of performing challenging high profile diverse projects.

S.NO	LIST OF PROJECTS	CLIENT	CONTRACTOR	FIN-YEAR	PROJECT STATUS
HYDRO/DAM PROJECT					
1	Hill slope protection work behind Dharasu Power House of Maneri Bhali Project Stage-II at Dharasu (Uttarkashi)	UJVN Limited, Uttarakhand	UJVN Limited, Uttarakhand	24-25	In progress
2	Consolidation Grouting at Dibang Dam Lot-2	NHPC	Larsen & Toubro Limited	24-25	In progress
3	Curtain Grouting Work at Lower Kopili Dam	NHPC	Larsen & Toubro Limited	24-25	In progress
4	Slope Stabilization work and TAM Grouting, Rattle Hydro Project	CVVPL, Jammu	Megha Engineering & Infrastructures Ltd	23-25	In progress
5	Hill Slope Excavation and Protection works	CVVPL, Jammu	Afcons Infrastructure Limited	23-25	In progress
6	Slope Stabilization work	CVVPL, Jammu	Jaiprakash Associates Limited, Jammu	23-25	In progress
7	TAM Drilling and Grouting at Main Cofferdam Project at Teesta III, Hydro Power Project (Phase I), Sikkim.	Sikkim URJA Limited	Larsen & Toubro Limited	24-25	In progress
8	Drilling & Grouting works at upper & Lower Reservoir	HIPL, Hyderabad	Himachal Infracon Private Limited	23-25	Completed
9	Slope Stabilization work (Rockfall Barrier)	HPSEBL, Himachal Pradesh	HPSEBL, Himachal Pradesh	24-25	Completed
10	Consolidation grouting work at gandhisager PSP	HIPL, Hyderabad	Himachal Infracon Private Limited	23-25	Completed
11	Consolidation Grouting Works on coffer dam	CVVPL Jammu	Patel Engineering Limited	23-24	Completed
12	Consolidation grouting work at gandhisager PSP	Greenko, MP	Larsen & Tourbo Limited. MP	23-25	Completed
13	Slope Stabilization works	CVVPL Jammu	Larsen & Toubro Limited	22-25	Completed
14	Consolidation/Contact grouting work	NHPC, Uri	NHPC, Uri	23-24	Completed
15	Drilling and grouting works of dam and coffer dam	SJVN, Govt Jammu	Patel Engineering Limited	20-23	Completed
16	Permanent Cable Anchor Works	GreenKo, Kurnool	Fressyinet Menard India Pvt	21-23	Completed
17	Kiru Hydro Power Project Term Grouting in Cofferdam	Chenab valley Power Project Limited	Patel Engineering Limited	21-23	Completed
18	Consolidation and Contact grouting works, Hydropower Project	LNT Hydro power Ltd	Larsen & Toubro Limited	19-20	Completed
19	125 MW solar Power Projects at Kamool	Greenko Energy, Kumool	TATA International Ltd, Mumbai	16-17	Completed
20	Cable Anchor Drilling and Micro pilling in Right Bank Dam of Punatsangchhu-I Hydro power project, Bhuttan	BHUTAN	LNT Hydro power Division, Bhutan	15-17	Completed
RAILWAY PROJECT					
1	Micropile & Retaining wall Remedial measures for sinking formation at Km 116/550-930, DN and Km 114/900-115/0 DN on Karjat- Lonavala section	Central Railway	Mumbai Division, Central Railway	24-25	In progress
2	Stabilization of vulnerable cutting slopes by provision of turf Reinforcement Mat/Geo mat arrangement & DT Mesh at KM 513/010 to 513/300 (RHS), KM 519/900 to 520/550 (LHS) & KM 487/903 to 488/200 (LHS)	South Western Railway	Hubli Division, South Western Railway	24-25	In progress
3	Micro pilling and allied slope and stabilization works at T1& P2	KRCL Jammu	VCCL	22-25	In progress
4	Cable Anchor Waork	Northern Frontier Railway	S.C Construction	23-25	Completed
5	Slope Protection Work (Rockfall Barrier)	IRCON, Jammu	KS Construction (Angel) Pvt Ltd	23-24	Completed
6	Design, Supply and Execution of Permanent Cable Anchoring 275MT works at KRCL projects Reasi J&K	KRCL, Jammu	Afcons infrastructure Ltd	20-21	Completed
7	Sevok Rangpo PKG., Rail Project TAM Grouting	IRCON, Sikkim	Royal Infra Construction Ltd	22-23	Completed
8	Permanent Vertical Anchor Works.	Sant Nirankari, New Delhi	Fressyinet Menard India Pvt Ltd.,	22-23	Completed
9	Micro Piling Works	RVNL Karwar	Navayuga Engineering Company	21-22	Completed
10	Consolidation Grouting Works at T49 Bridge	USRBL J & K	Afcons infrastructure Ltd	20-21	Completed
11	Cable Anchor Drilling works at Chenab Bridge Projects	KRCL Jammu	Fressyinet Menard India Pvt Ltd	17-21	Completed
12	Hybrid Micro Pile foundations works at KRCL projects Reasi J&K	KRCL Jammu	Afcons infrastructure Ltd	17-19	Completed
13	Consolidation Grouting Works at Chenab Bridge projects	KRCL, Jammu	Afcons infrastructure Ltd	17-18	Completed
ABOARD PROJECT					
1	Upgrading of the drinking water supply system for the town Gueyo and surrounding localities (Lot-I)	ONEP, Ivory Coast	Afcons Infrastructure Ltd, Ivory Coast	24-25	In progress
2	Construction of Camp office	ONEP, Ivory Coast	Afcons Infrastructure Ltd, Ivory Coast	23-24	Completed
3	Male-GMT-MLT Projects (Cavity Grouting)	Government of Maldives	Afcons infrastructure Ltd	21-23	Completed
4	Water supply Project (Borewell and Pipeline)	ZAWA, Tanzania	Afcons infrastructure Ltd	22-23	Completed

OUR PROJECTS AND CLIENTS

Evergreen Enterprises has worked in complex projects and has technical experience to meet contracting standards and capable of performing challenging high profile diverse projects.

S.NO	LIST OF PROJECTS	CLIENT	CONTRACTOR	FIN-YEAR	PROJECT STATUS
METRO/HSR PROJECT					
1	Construction of Micropile, TAM Grout Work & Borehole works at PC-03	DMRCL, Patna	Larsen & Tourbo Limited, Patna	23-25	In progress
2	Drilling and Installation of cable Anchor C1	NHSRCL	Fressyinet Menard India Pvt Ltd. Mumbai	23-25	In progress
3	Vertical drilling for cable anchoring Work TU02 & ECV 01 for Phase 2	CMRL, Chennai	Larsen & Tourbo Limited, Chennai	23-25	Completed
4	Drilling of Pre-borehole in soil & Rock UG-06 for Phase 2	CMRL, Chennai	TATA Projects	23-25	Completed
4	Drilling of Pre-Drilling in soil & Rock UG-03 & UG-04 for Phase 2	CMRL, Chennai	URC Construction Pvt. Ltd.,	23-25	Completed
4	Drilling of Borehole for soil/rockprobing at DC-05 metro stations	DMRCL, Delhi	Afcons Infrastructure Limited, New Delhi	23-24	Completed
5	Temporary Cable Anchor for Bangalore Metro	BMRCL Bangalore	Afcons infrastructure Ltd	21-23	Completed
6	Borewell works at BMRCL projects	BMRCL Bangalore	Afcons infrastructure Ltd	20-23	Completed
7	TAM grouting works at BMRCL	BMRCL Bangalore	Larsen & Toubro Limited	20-21	Completed
8	Plunge Column Drilling and Installation works Mumbai metro Rail Projects	MMRC, Mumbai	LNT SUGG, Package 07	18-20	Completed
9	Plunge Column Drilling and Installation works Mumbai metro Rail Projects	MMRC, Mumbai	LNT SUGG, Package 01	18-19	Completed
10	Chennai Metro Rail Projects Various types Foundation, Micro piles, Dewatering Drilling and Grouting of Dwell panels, Excavation Work, Supplying of Equipment's, Chennai	CMRL	Afcons infrastructure Ltd	13-18	Completed
SLOPE STABILIZATION					
1	Slope Stabilization work (SDA, Shotcrete, DT-mesh, Breast wall)	PWD, HP	PWD, HP	24-25	In progress
2	Slope Stabilization work (SDA, Shotcrete, DT-mesh, Breast wall)	PWD, HP	PWD, HP	24-25	In progress
3	Slope Stabilization work	NHIDCL, Jammu	Apco Infratech Pvt Ltd, Kashmir	23-25	In progress
4	Construction of Drain hole works	PWD & R&B Assam	Shree Gautam Construction co.Ltd. Assam	23-24	Completed
5	Slope Stabilization work	MRPL, Mangalore	Onycon Infrastructure Ltd, Mangalore	23-24	Completed
6	Slope Stabilization and Rock fall protection work	NHAI, Kamataka	Ramalingam Construction Company (P) Ltd, Bangalore	22-23	Completed
7	Slope Stabilization works	NHAI, Nashik	Afcons infrastructure Ltd	21-23	Completed
8	Slope Stabilisation works	NHAI, Pandoh, HP	Afcons infrastructure Ltd	20-23	Completed
9	Consolidation grouting and Chemical Grouting works in tunnels	Samruddhi ExpressWay, Nashik	Afcons infrastructure Ltd	20-22	Completed
10	Slope Stabilisation works at Rothang Tunnel Projects Himachal Pradesh	BRO	Strabag Afcons JV	19-21	Completed
OTHER PROJECT					
1	Fabrication, erection & alignment of Structural Steel	BHEL, India	URC Construction Pvt. Ltd.,	23-25	In progress
2	Hill Protection Work at Kargahar Valley Golf Course, Navi Mumbai	CIDCO	CIDCO	23-25	Completed
3	Rehabilitation of contaminated soil	Hindustan Uniliver, Kodaikanal	Hindustan Uniliver	21-23	Completed
4	Curtain Grouting works at Polavaram Dam Projects	Irrigation Department Andrapradesh	MEIL	20-21	Completed
5	Pile load test Anchoring works at Seebird Projects, Karwar	SEA BIRD, Karwar, Karnataka	NCC	20-21	Completed
6	Vertical Ground Anchoring at Asrani resorts India, New Delhi	Asrani Inns and Resorts Pvt Ltd	Fressyinet Menard India Pvt Ltd	18-19	Completed

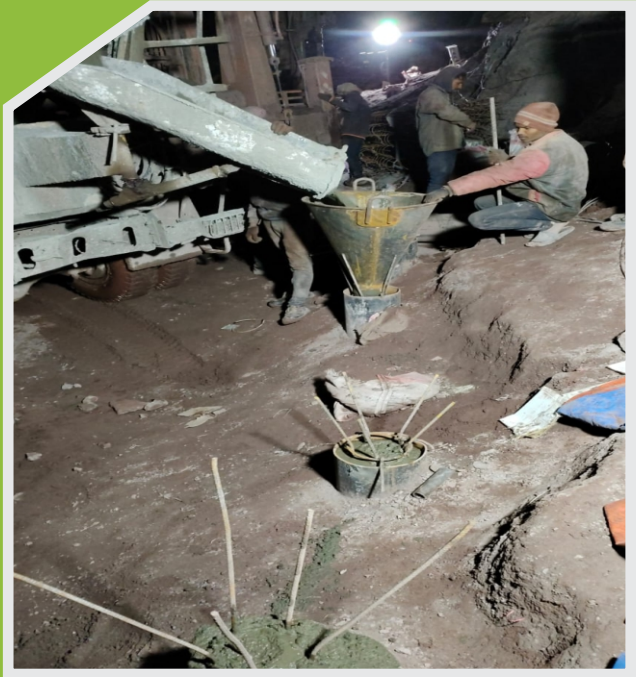
MARINE CAVITY GROUTING WORK AT MALDIVES



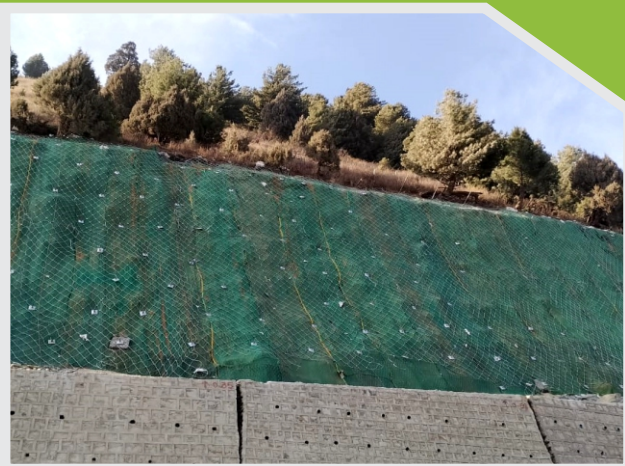
DRAIN HOLE DRILLING AND INSTALLATION AT HAFLONG, ASSAM



MICRO PILLING, SAWLAKOTE, JAMMU



SLOPE PROTECTION WORK, Z MORH TUNNEL, JAMMU

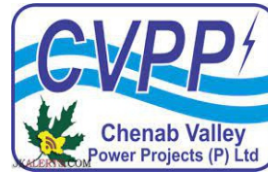


TAM GROUTING WORK AT LUHRI HYDRO ELECTRIC PROJECT AT HIMACHAL PRADESH





Konkan Railway Corporation Limited





AFCONS INFRASTRUCTURE LIMITED
A Shapoorji Pallonji Group Company



Megha Engineering &
Infrastructures Limited



METRO TUNNELLING CHENNAI
L&T - SUCG JV

(A Joint Venture between Larsen & Toubro Limited and Shanghai Urban Construction Group)





EVERGREEN ENTERPRISES

**HEAD OFFICE : No.10, Sankari bye-pass road,
Pallipalayam, Namakkal District, TamilNadu - 638 006.
India.**

Email : nkm@evgcpl.com

GSTIN : 33AADFE5468R2ZU

PAN : AADFE5468R

N.KESAVAMOORTHY

+91 9566 261919