



EVERGREEN ENTERPRISES



Company Overview

Evergreen Enterprises was established in 2013 focusing Borewell, Mining, Drilling Contracting works. Our Head Office is located in Erode, India. Being a service provider company for construction and infrastructure, we offer solutions to Hydro Power Projects, Dams, Tunnels & Solar Power Plants, Commercial Buildings and other civil engineering works now. We also supply construction equipment in India and abroad.

We have diversified our activities into drilling, grouting works such as TAM Grouting, Consolidation Grouting, Curtain Grouting, Tunnel Contact Grouting, Slope Stabilization works such as Rock Anchors, Rock Bolting, Self Drilling Anchors, Shotcreting, Rock fall barriers, High Tensile Mitigation, Micropiling, Ground anchors, Prestressing and other civil works. The company has all the state-of-the-art machinery like, DTH Drilling Rig, Rotary drilling Rig, Crawler Drilling Rig and Tractor Drilling Rig. The detailed list is enclosed here with.

It is our prime objective to deliver highest quality work to meet the satisfaction of our customers in every project we undertake. Our growth momentum is to increase our annual turn over on a year-on-year basis.

We are a well experienced, professionally managed, technically & financially sound group capable of meeting up to the requirements of our existing. Clients & prestigious customers. We are enclosing our company profile containing equipment and Clientele.



Our Mission

On a journey towards becoming the Preferred Destination for single point solution provider in Geotechnical & Civil Engineering.

To strive for excellence through teamwork & partnership, Aim to be best in our field, driven by values and a desire for continuous improvement in every area.

Our Vision

We are committed to providing quality services to improve and develop the overall infrastructure of various utilities across countries. We hope to support and help companies provide essential services to the common man.

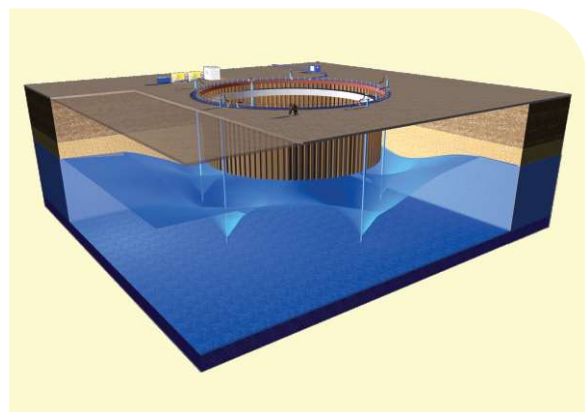
It is our responsibility to continually develop, and tap into, the potential of our employees. We are focused not only on the growth of Evergreen construction as a company but also on the growth and success of everyone associated with us.

Our Services

Evergreen Enterprises offers a gamut of services that cater to a very diverse range of industries. Below is a glimpse of the services we provide and the industries they can be utilized in.

DEWATERING

It is a technique wherein a deep well system is used to drain water from a ground water table, in spite of the huge volume of water. Artificial temporary wells are created with the help of a submersible pump. Multiple borewell points are located and to create dewatering options. Once the water is removed, the construction proceeds smoothly.



GEO TECHNICAL INVESTIGATION

Core drilling is a technique where in a hollow cylindrical drill bit is used to make holes. The drill bits are made of metal and the tips are either diamond or carbide coated



WATER WELL DRILLING- DTH WATER WELL DRILLING

DTH stands for “down-the-hole”.

In DTH drilling, the hammer is placed above the drill bit. The force required is transmitted by the drill pipes. The hammer and the drill bit rotate with a fluid which could be air or water or drilling mud.

Successive pipes are added behind the hammer as and when the hole gets deeper.



Rotary Drilling

Rotary drilling is a technique where in a deep Observation bore hole is made in order to obtain rock samples. The drilling method involves the use of a rotary cutting head at the end of a long shaft. This is driven into the ground as the head rotates. The system gets the required lubrication using air, water or drilling mud. This helps to keep the cutting head cool.

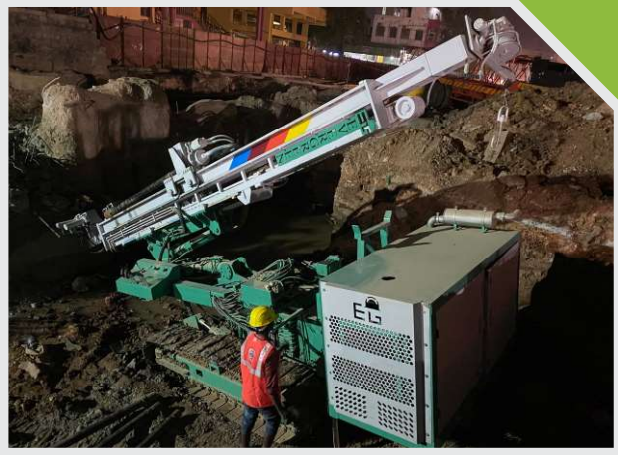
Odex Drilling

Odex stands for Overburden Drilling Eccentric. In this technique a casing is used to line the hole that over burdens the soil before entering the rock layer.

GROUND ANCHOR

It is a device that is de-signed to support structures and is used in geo technical and construction applications. It can be referred to as a percussion driven Soil anchor, Rock bolt and Cable anchor.

DRILLING WORKS



STRESSING & GROUTING

U-TURN RETRACTABLE ANCHOR



SLOPE STABILIZATION



ROCK BOLTING

Rock bolting is a technique used in tunneling and mining where a steel rod is inserted into the rocks. It is to impart support to the roof and sides of the tunnel.



SELF DRILLING ANCHOR

Self drilling anchors are a particular kind of rod anchors. They combine the processes of drilling, insertion as well as grouting. This greatly reduces the time taken to complete the project.



SHORT CRETING

It is a method by which concrete is pneumatically conveyed on to a surface during construction. The concrete is strengthened with steel mesh or rods. It is a method by which concrete is pneumatically conveyed on to a surface during construction. The concrete is strengthened with steel mesh or rods.



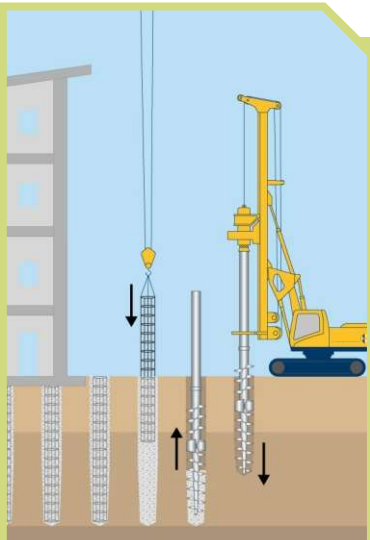


HIGH TENSILE MITIGATION

Steel Structures with high strength and tensility are used to prevent rock fall. They are highly durable and can withstand heavy loads. They can be used as a drapery or along with plates to anchor the mesh.

ROCK FALL BARRIERS

They contain a specific braking system. The energy absorption is structured in such a way that the performance is consistent even over time. The barrier is resistant to damage by corrosion.

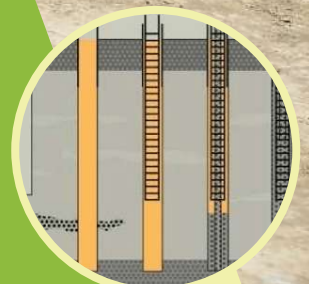


MICROPILING

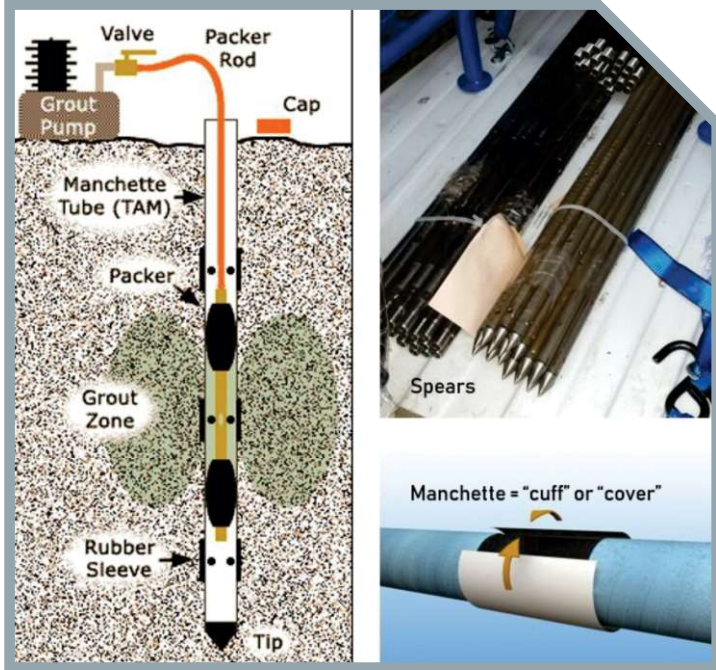
Micropiles are friction piles that run deep into the foundation. They are formed using strong steel casings. This pile helps in the load pressure to be transmitted to the soil around them.

These piles are inserted deep into the foundation and strengthened by adding a mortar of sand and cement.

They are used in rocky areas to provide structural support and underpin the foundation. They help in transfer of load.



GROUND IMPROVEMENT

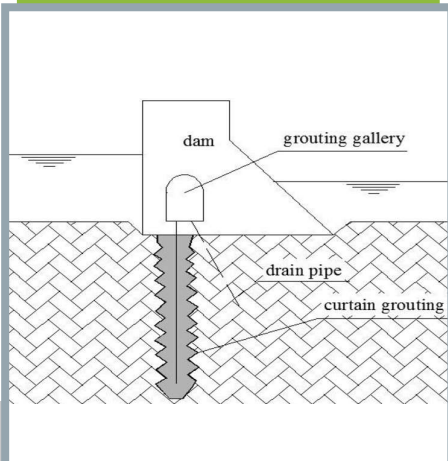


TAM GROUTING

Tube a Manchette (TAM) grouting is a method where in perforated pipes are used in combination with a special grout. These pipes/tubes are then thrust into the hole for grouting. The small portions of rubber sleeve (Manchette) are present on the outer portion of the pipe that acts as a one way valve.

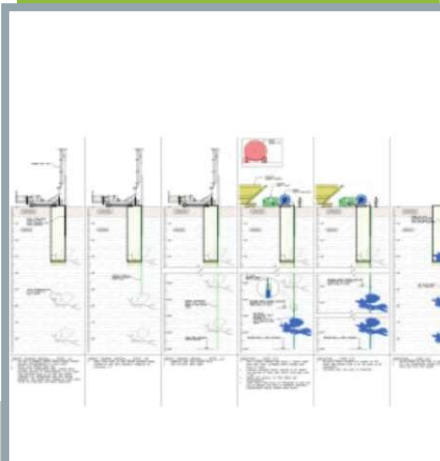
It is commonly used in tunnel excavations.

CURTAIN GROUTING



Curtain grouting is the technique where a curtain or barrier of grout is constructed to reduce permeability. It is done by drilling and grouting a series of holes.

CONSOLIDATION GROUTING



This technique is used when open voids that are present in rock mass with fluid matter. This reduces permeability by improving the shear strength. Also, this reduces deformability. It also helps to reduce the outward flow of water in high pressure water tunnels.

TUNNEL CONTACT GROUTING



During the Tunnel Contact grouting process, grout is injected into voids between a tunnel liner and rock surrounding it. Additional consolidation of rock formation surrounding the tunnel is also achieved with this technique.

HIRING



ROAD RAIL VEHICLE

A road-rail vehicle is a hybrid vehicle which can run both on rail tracks and a regular road. They are dual type vehicles which can be used for the purpose of construction & maintenance works by civil engineers.



AIR COMPRESSOR 300 to 1100 CFM

An air compressor is a pneumatic machine. It uses power to store air under pressure. This compressed air is kept in storage tanks. Once the desired compression level is reached, the compressor shuts off.



CRAWLER MOUNTED DRILLING RIG

A Crawler Mounted Drilling Rig is mainly useful for drilling and exploration in rock formation.



LIST OF MACHINERIES

S.no	Name	Number
1	Excavators,-Ex200	3
2	Air Compressor 1200 Cfm	3
3	Air Compressor 1100 Cfm	10
4	Air Compressor 600 Cfm	4
5	Air Compressor 500 cfm	4
6	Air Compressor 450 cfm	6
7	Lorry Mounted DTH Drilling Rig	5
8	Hydraulic Crawler Drilling Rig	9
9	Tractor Drilling Rig.	3
10	Wagon Drill / RocDrill Rig	8
11	Hydraulic Jacks & Pumps	10
12	High Pressure grouting Pumps	18
13	Hanging Mast	10
14	Crawler Mounted ROC	7
15	Shotcrete Pump	5
16	Road Rail Wheel Vehicle	2
17	Vertical Turbine Pump unit	2





AFCONS INFRASTRUCTURE LIMITED
A Shapoorji Pallonji Group Company



Megha Engineering & Infrastructures Limited



GAMMON
Builders to the Nation



TENZA



METRO TUNNELLING CHENNAI
L&T - SUCG JV

(A Joint Venture between Larsen & Toubro Limited and Shanghai Urban Construction Group)



MACCAFERRI



Quality is our foundation



Building Values



Unilever



NAVAYUGA



Konkan Railway Corporation Limited



Border Roads Organisation



VENSAR



Government of Jammu & Kashmir

Jal Shakti Department



EVERGREEN ENTERPRISES

**OFFICE : 12/1, Chokkanathar Street, Fort,
District-Erode - 638001
TamilNadu.**

E-Mail : evergreenconstructions09@gmail.com

GSTIN : 33AADFE5468R2ZU

PAN : AADFE5468R

N.KESAVAMOORTHY

+91 9566 261919

B. KARUNA MOORTHY

+91 93619 97788